

COMMONWEALTH OF KENTUCKY
OLDHAM COUNTY
ORDINANCE NO. KOC 23-200-372

AN ORDINANCE RELATING TO THE ESTABLISHMENT OF MAGISTRATE DISTRICT
BOUNDARIES IN OLDHAM COUNTY, KENTUKY.

WHEREAS, the Oldham County Fiscal Court is mandated pursuant to KRS 67.045 (3,4 and 5)
to initiate and complete redistricting and re-establishing boundaries for magisterial districts in
Oldham County; and,

WHEREAS, Oldham County Fiscal, pursuant to KRS 67.045 (4), has published notice of the
planned reapportionment and has appointed three (3) competent citizens as commissioners to
reapportion the county into eight (8) magistrate districts; and,

WHEREAS, the commissioners have laid out the boundaries and have filed with the Oldham
County Clerk's office and each Fiscal Court member a written report showing the boundary of each
district and the estimated population of each;

WHEREAS, the court has assigned three (3) magistrates to review the findings of the
commissioners and complete further modifications that fit into the required specification of area,
population and contiguousness;

NOW, THEREFORE, be it ordained by the Fiscal Court of Oldham County, Kentucky that:

SECTION 1: PURPOSE AND SCOPE

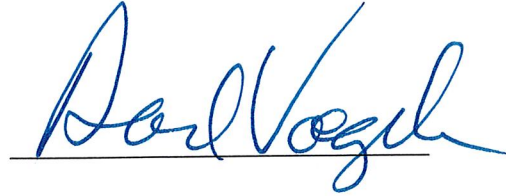
The purpose of this ordinance is to adopt by reference the following eight (8) of the
recommended reapportioned magistrate districts, provided for by the appointed commissioners,
filed with the Oldham County Clerk on 29th day of June, 2023 and amended by the Fiscal Court
Committee, those eight (8) districts being all magisterial districts in the County. Said districts to be
identified by the following boundaries:

(See Attached)

By this ordinance Oldham County Fiscal Court does hereby adopt this report and establish the aforesaid recommended eight (8) districts pursuant to KRS 67.045, as set out in the above.

This ordinance shall become effective upon its adoption and publication according to law.

Dated this 28th day of August, 2023.



DAVID VOEGELE

Oldham County Judge/Executive

First Reading: 8.15.23

Second Reading: 8.28.23

ATTEST:



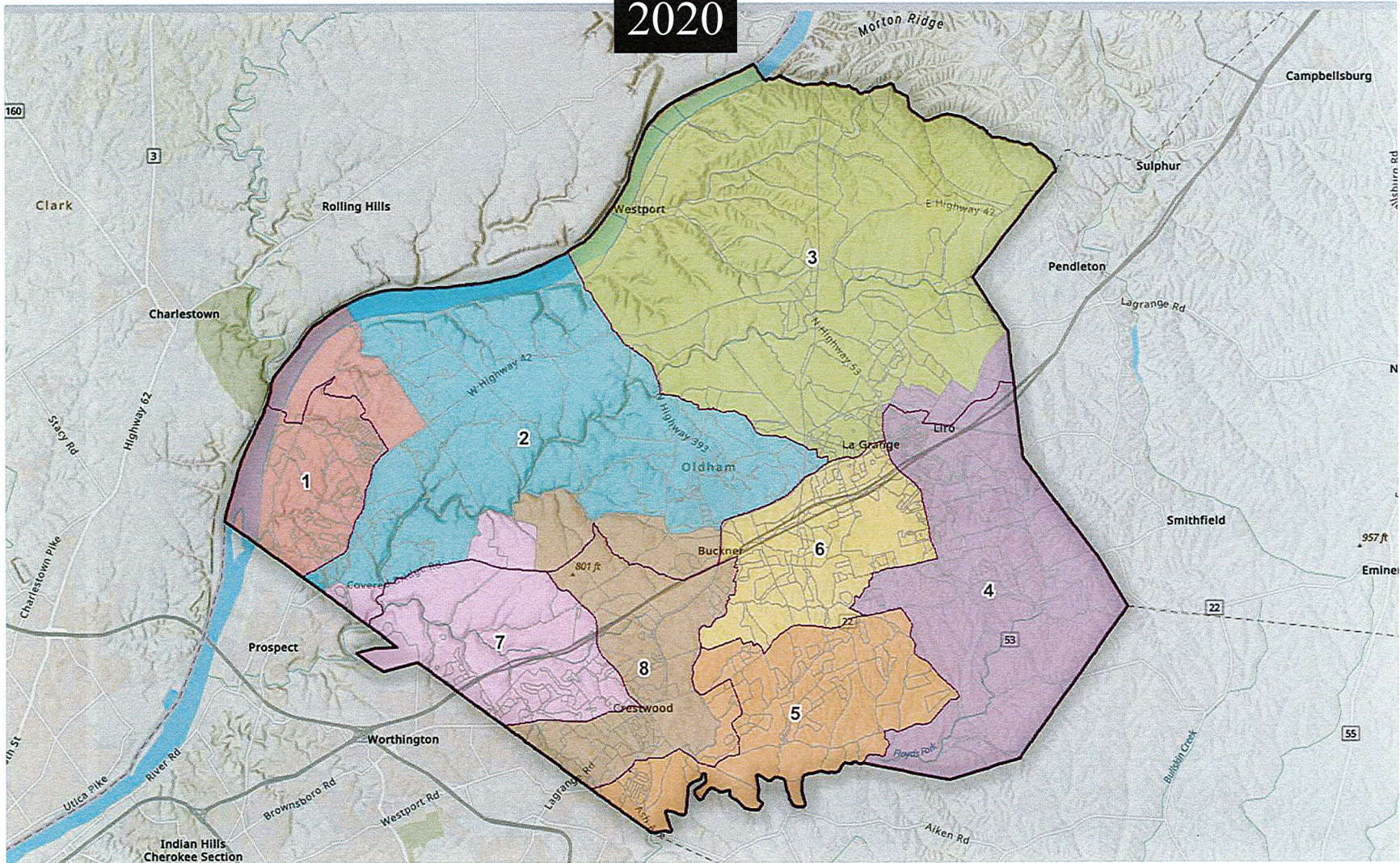
Tara Long

Oldham County Fiscal Court Clerk

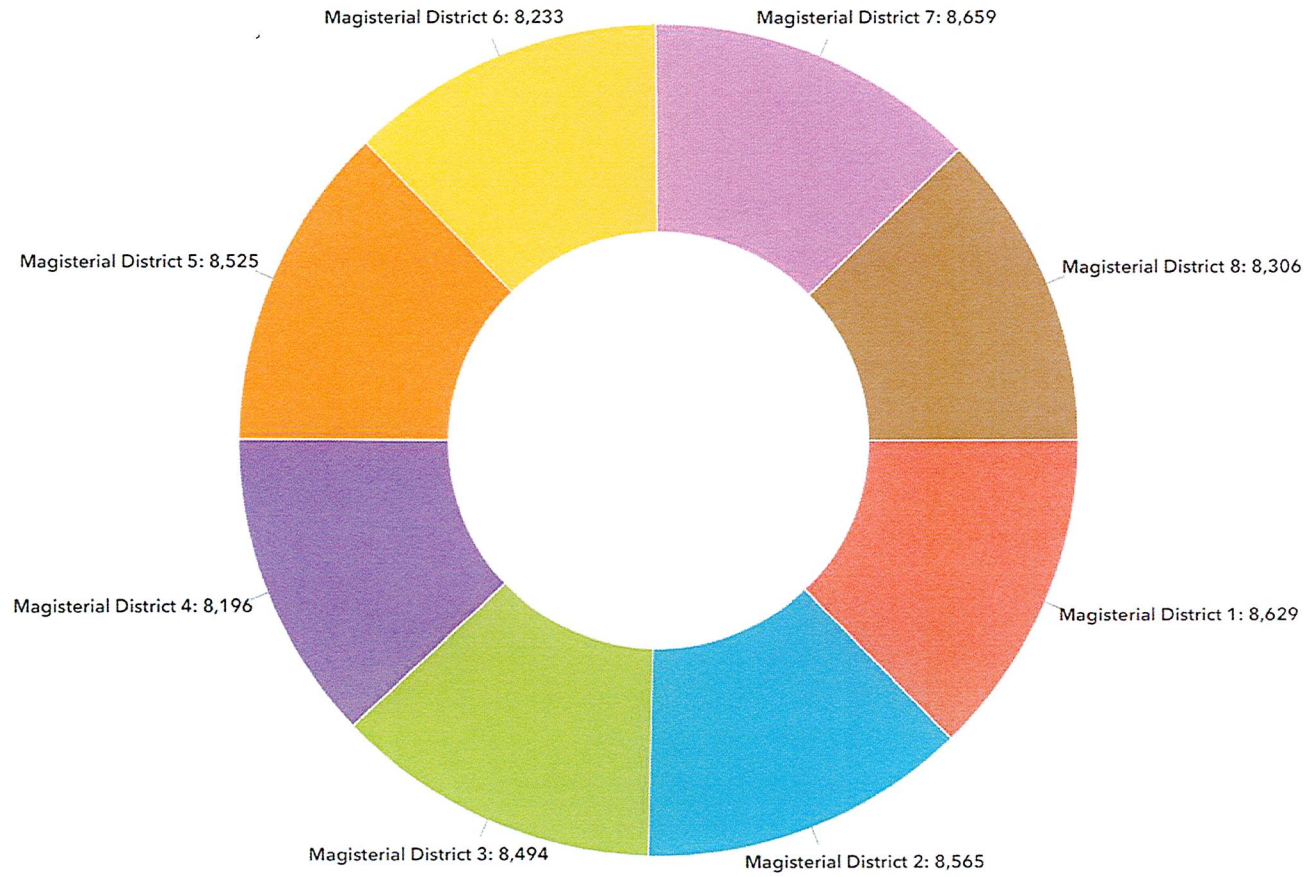
Total Population of Oldham County
67,607

Population 5% difference for Magisterial District
8027 - 8873

2020



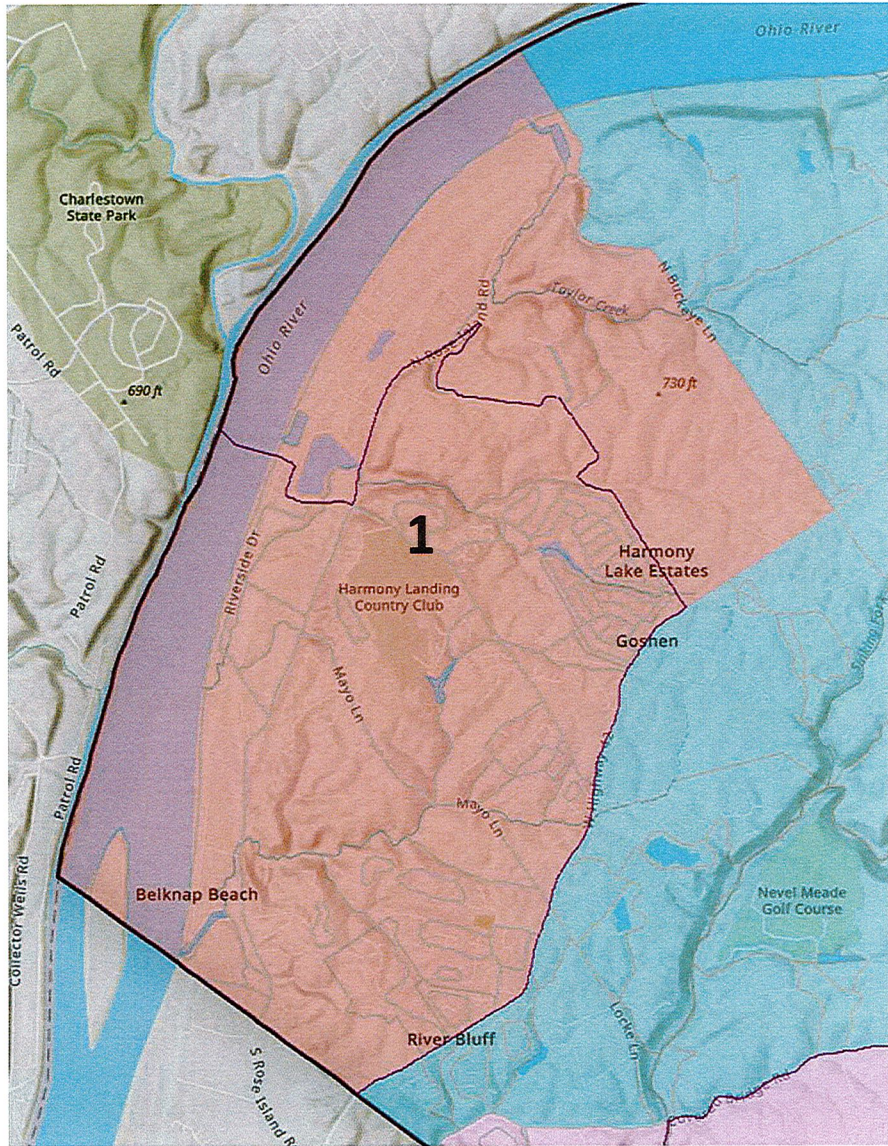
Population of Oldham County Magisterial Districts



MAGISTERIAL DISTRICT 1

BEING bounded on the southwest by Jefferson County, on the northwest by the State of Indiana, on the north, east and south by Magisterial District 2, and being more particularly described as follows:

BEGINNING at the intersection of U. S. Highway 42 with the boundary of Jefferson County; thence northwest with the Jefferson County boundary to its intersection with the state boundary between Kentucky and Indiana in the Ohio River; thence northeast (upstream) with the state boundary to its intersection with the westerly extension of N Buckeye Lane and being a corner with Magisterial District 2; thence with the lines of District 2 for the following courses: east with N Buckeye Lane and continuing east with N Buckeye Lane to the intersection with Highway 42, and then southwest with Highway 42 to the beginning.



DISTRICT 1
Population: 8629
13%

MAGISTERIAL DISTRICT 2

BEING bounded on the northwest and north by the State of Indiana, on the east by Magisterial District 3, on the southeast by Magisterial District 6, on the south by Magisterial District 8 and Magisterial District 7, on the southwest by Jefferson County, and on the northwest by Magisterial District 1, and being more particularly described as follows:

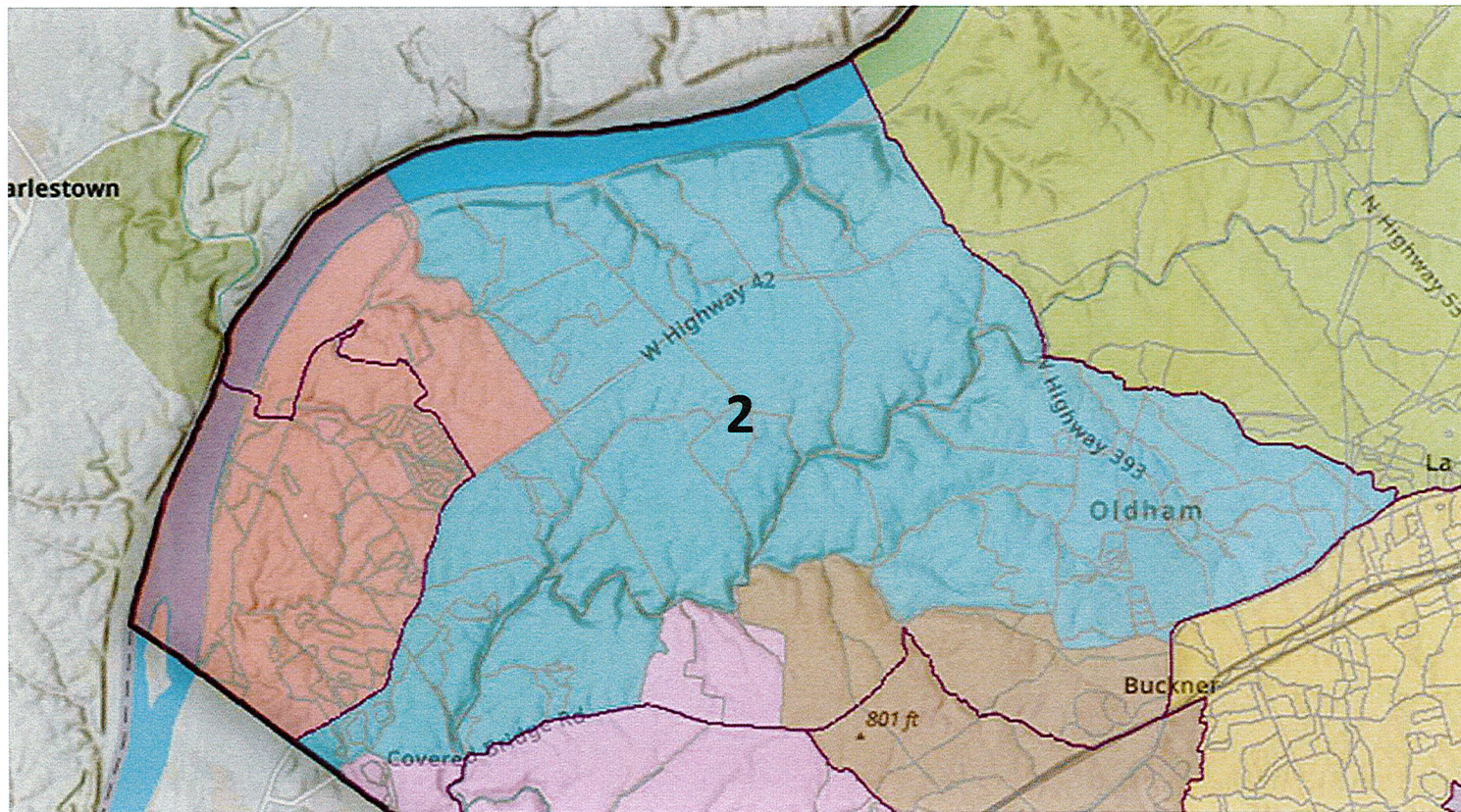
BEGINNING at the intersection of U.S. Highway 42 and the boundary of Jefferson County and being a corner with Magisterial District 1; thence with the lines of Magisterial District 1 for the following courses: northeast with Highway 42 to the intersection with N Buckeye Lane; northwest with N Buckeye Lane to the intersection with the state boundary between Kentucky and Indiana in the Ohio River; thence easterly (upstream) with the state boundary to its intersection with the northwest extension of a private driveway running northwest from Kentucky Highway 393.

Being a corner with Magisterial District 3; thence with the lines of District 3 for the following courses: southeast with the northwesterly extension of the private driveway and continuing southeast with the private driveway to the intersection with Highway 42 and Highway 393; southeast with Highway 393 to the intersection with Harrods Creek at the convergence of Cedar Creek; southeast along Cedar Creek (upstream) , continuing southeast onto North Fork Cedar Creek (upstream); southeast along North Fork Cedar Creek to its intersection with Lagrange Corporate Boundary; southeast along City of Lagrange corporate boundary to the intersection with Hwy 146.

Being a corner of Magisterial District 3 and Magisterial 6; thence along with the lines of Magisterial District 6 for the Following courses: West along Hwy 146 to the intersection with Hwy 1817 (New Cut Rd).

Being a corner of Magisterial District 6 and Magisterial 8; thence along with the lines of Magisterial District 8 for the Following courses: west along Hwy 1817 to intersection with South Fork Darby Creek; North with South Fork Darby Creek to the confluences with Darby Creek; thence west along Darby Creek (downstream) to confluence with Harrods Creek; south with Harrods Creek to the intersection with Gum Street.

Being the corner of Magisterial District 8 and Magisterial District 7; thence along with the lines of Magisterial District 7 for the following courses: southwest along Harrods Creek to a northerly extension of Constantine Drive; thence south along extension onto Constantine Drive to the intersection with Hwy 329; thence west on Hwy 329 to the boundary of Jefferson County; northwest along Jefferson County boundary and the beginning.



DISTRICT 2
Population: 8565*
13%

*Includes 2,172
inmate population
of Kentucky State
Reformatory

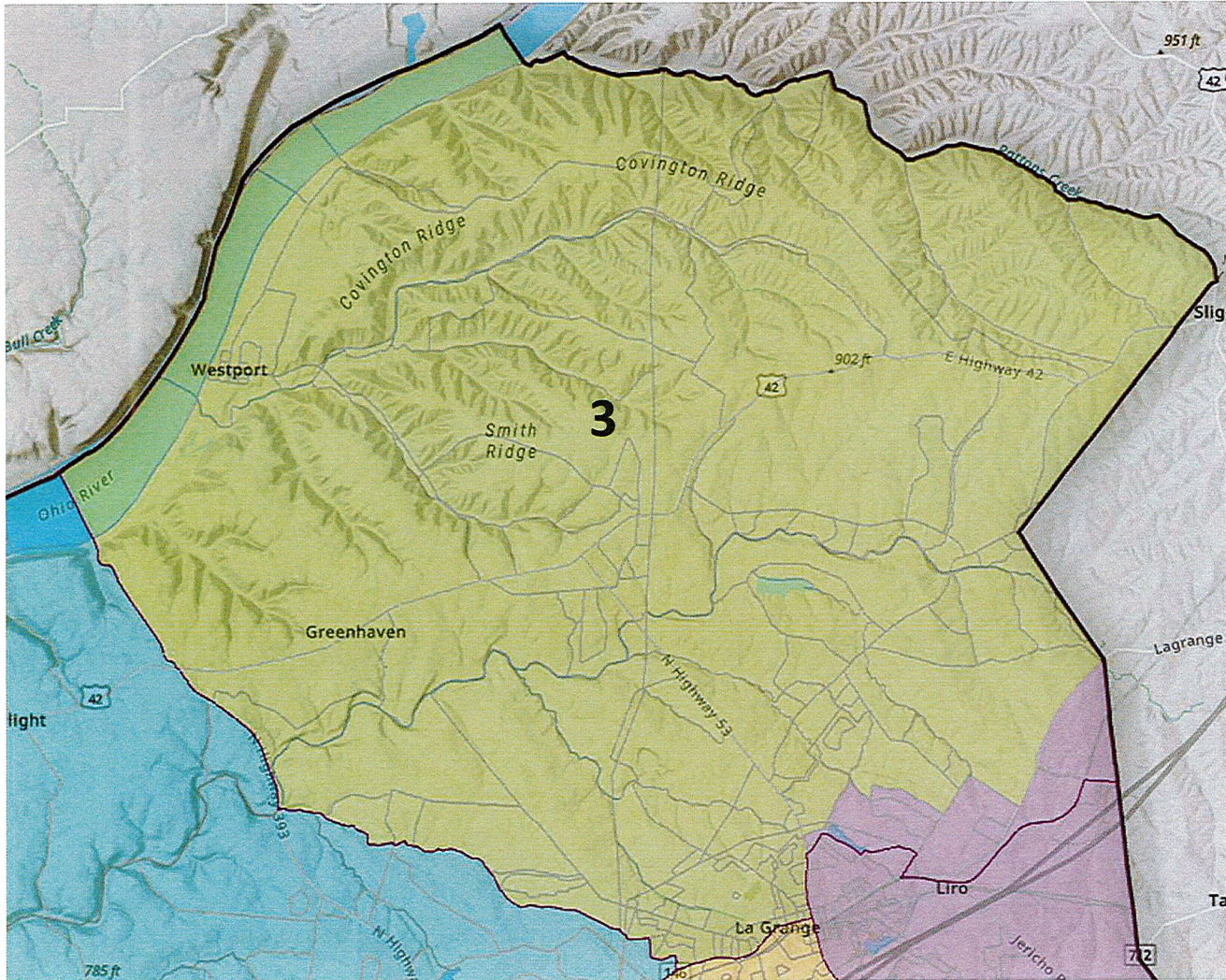
MAGISTERIAL DISTRICT 3

BEING bounded on the northwest by the State of Indiana, on the northeast by Trimble County, on the east by Henry County, on the southeast by Magisterial Districts 4 and 6 and on the southwest by Magisterial District 2, and being more particularly described as follows:

BEGINNING at the intersection of Hwy 146 and City of Lagrange corporate boundary (just east of Oldham County Fairgrounds) and being the corner of Magisterial District 6 and Magisterial District 2; thence along with the lines of Magisterial District 2 for the following Courses: northwest along Lagrange corporate boundary to intersection with North Fork Cedar Creek; continuing northwest along North Fork Cedar Creek to confluence with Harrods creek and intersection of Hwy 393; north with Hwy 393 to the intersection of US42; west on US42 for approximately 150ft to intersection with a private driveway; then northwest along private drive and a northwesterly extension of private drive to the state boundary between Indiana and Kentucky in the Ohio River; thence northeast (upstream) with the state boundary to a northwest extension of Pattons Creek and the Trimble County line; east and southeast with Trimble County and upstream with Pattons Creek to the intersection with the Henry County line; thence south with Henry County boundary to its intersection with Highway 146.

Being a corner with Magisterial District 4; thence with the lines of District 4 for the following courses: west with Highway 146 to the intersection with City of Lagrange corporate boundary; northwest with City of Lagrange corporate boundary to intersection with Fort Pickens Road; Southeast with Fort Pickens Road to the intersection with Foxboro Rd to Hawk Hill Rd; South on Hawk Hill Rd for .15 miles to the Intersection with tributary for Ash Creek; Northwest along Ash Creek Tributary to intersection with Lagrange City Boundary; Southwest along Lagrange city boundary to the intersection with N Hwy 53 ; south with Highway 53 to the intersection with Kentucky Highway 146 (East Jefferson Street).

Being a corner with Magisterial District 4 and Magisterial 6 ; thence with the lines of Magisterial District 6 for the following Courses: west with Highway 146 to the intersection with City of Lagrange corporate boundaries and the beginning.



DISTRICT 3
Population: 8494
13%

*Includes 1,163 inmate population of Kentucky Correctional Psychiatric Center and 167 of Oldham County Detention Center inmates.

MAGISTERIAL DISTRICT 4

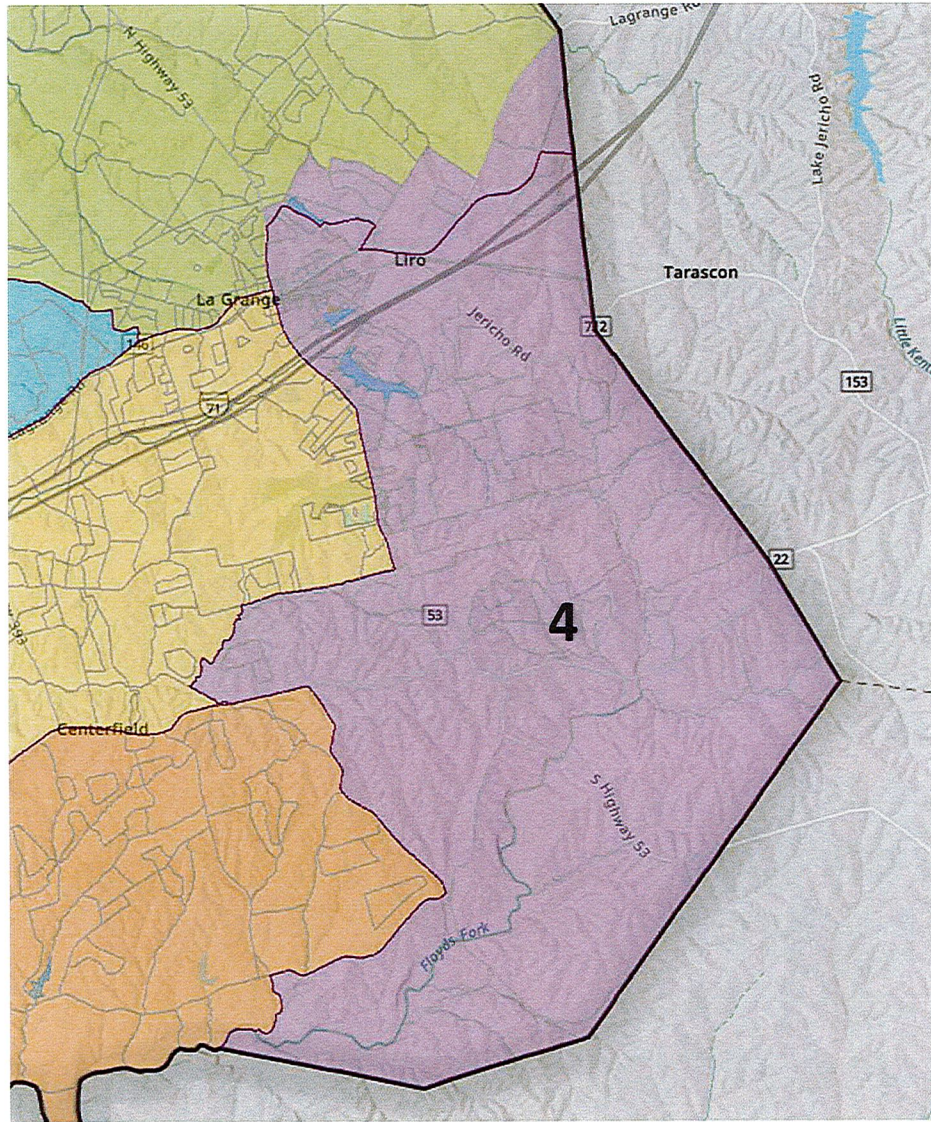
BEING bounded on the north by Magisterial District 3, on the east by Henry County, on the southeast and south by Shelby County and on the west by Magisterial Districts 5 and 6, and being more particularly described as follows:

BEGINNING at the intersection of Kentucky Highway 53 (First Avenue) and Kentucky Highway 146 (Jefferson Street) and being a corner with Magisterial Districts 6 and 3; thence with the lines of District 3 for the following courses: north with Highway 53 for .72 miles to the intersection with Lagrange City Boundary ; northeast with Lagrange City Boundary to the tributary for Ash Creek; thence along Ash Creek tributary for .30 miles to the intersection with Hawk Hill Rd; north along Hawk hill road to Foxboro Rd; southeast of Foxboro Rd to Ft. Pickens Road and Lagrange corporate boundary, continuing northeast then south east along Lagrange corporate boundary to intersection with

southeast and northeast with the City of LaGrange corporate boundary to the intersection with Kentucky Hwy 146; Northeast along Kentucky Hwy 146 to Henry County boundary; thence south and southeast with the Henry County boundary to its intersection with the Shelby County boundary; thence southwest and west with the Shelby County boundary to the intersection with Floyds Fork.

Being a corner with Magisterial District 5; thence with the lines of District 5 for the following courses: northeast (upstream) with Floyds Fork to the intersection with an unnamed tributary; north (upstream) with the unnamed tributary to the intersection with Kentucky Highway 1818 (East Mount Zion Road); northeast with Highway 1818 for .32 miles to the intersection unnamed tributary; north with unnamed tributary for 1.25 miles to intersection with Summer View Lane ; Continuing north with Summer View Lane to the intersection with Hwy 2859 (Fible Lane); northwest with Highway 2859 (Fible Lane) to the intersection with Kentucky Highway 22 (Ballardsville Road); west with Highway 22 to its intersection with an unnamed tributary to the South Fork of Curry's Fork.

Being a corner with Magisterial District 6; thence with the lines of District 6 for the following courses: northwest (downstream) with the unnamed tributary to the intersection with the South Fork of Curry's Fork; northeast (upstream)with the South Fork of Curry's Fork to the third intersection with an unnamed tributary; north (upstream) with the unnamed tributary to the intersection with Kentucky Highway 2856 (Moody Lane); east with Highway 2856 to the intersection with Kentucky Highway 53; and north and northwest with Highway 53 (becoming First Avenue) to the beginning.



DISTRICT 4
Population: 8196
12%

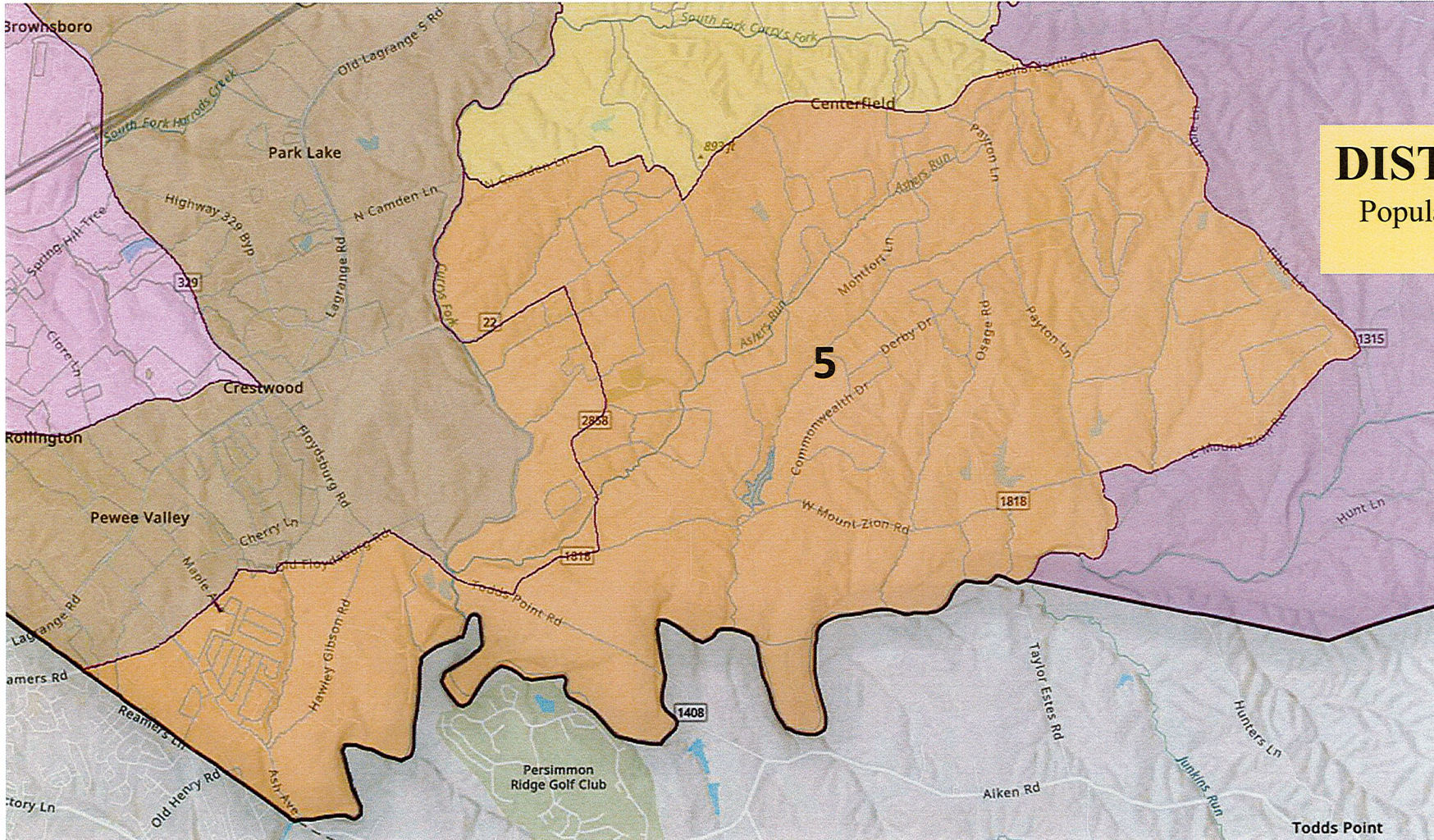
MAGISTERIAL DISTRICT 5

BEING bounded on the north by Magisterial District 6, on the northeast, east and southeast by Magisterial District 4, on the south by Shelby County, on the southwest by Jefferson County and on the northwest and west by Magisterial District 8, and being more particularly described as follows:

BEGINNING at the intersection of Kentucky Highway 22 and Curry's Fork and being a line with Magisterial District 8 thence along the lines of Magisterial District 8 for the following courses: north (upstream) with Curry's Fork to the intersection with North Camden Lane.

Being a corner with Magisterial District 8 and Magisterial District 6; thence with the lines of District 6 for the following courses: east with North Camden Lane to the intersection with Kentucky Highway 22; northeast with Highway 22, passing a corner with Magisterial District 4, to the intersection with Kentucky Highway 2859 (Fible Lane) and being in a west line of District 4; thence with the lines of District 4 for the following courses: southeast with Highway 2859 to the intersection with Kentucky Highway 1818 (East Mount Zion Road); southwest with Highway 1818 to the second intersection with an unnamed tributary to Floyds Fork; south (downstream) with the unnamed tributary to the intersection with Floyds Fork; and southwest with Floyds Fork to the intersection with the Shelby County boundary; thence southwest with the Shelby County boundary to its intersection with the Jefferson County boundary; thence northwest with the Jefferson County boundary to its intersection with Old Floydsburg Road.

Being a corner with Magisterial District 8; thence with the lines of District 8 for the following courses; northeast with Old Floydsburg Road to the intersection with Kentucky Highway 1408 (Todds Point Road); southeast with Highway 1408 to the intersection with Curry's Fork; thence northeast with Curry's Fork to intersection with Kentucky Highway 22 and the beginning.

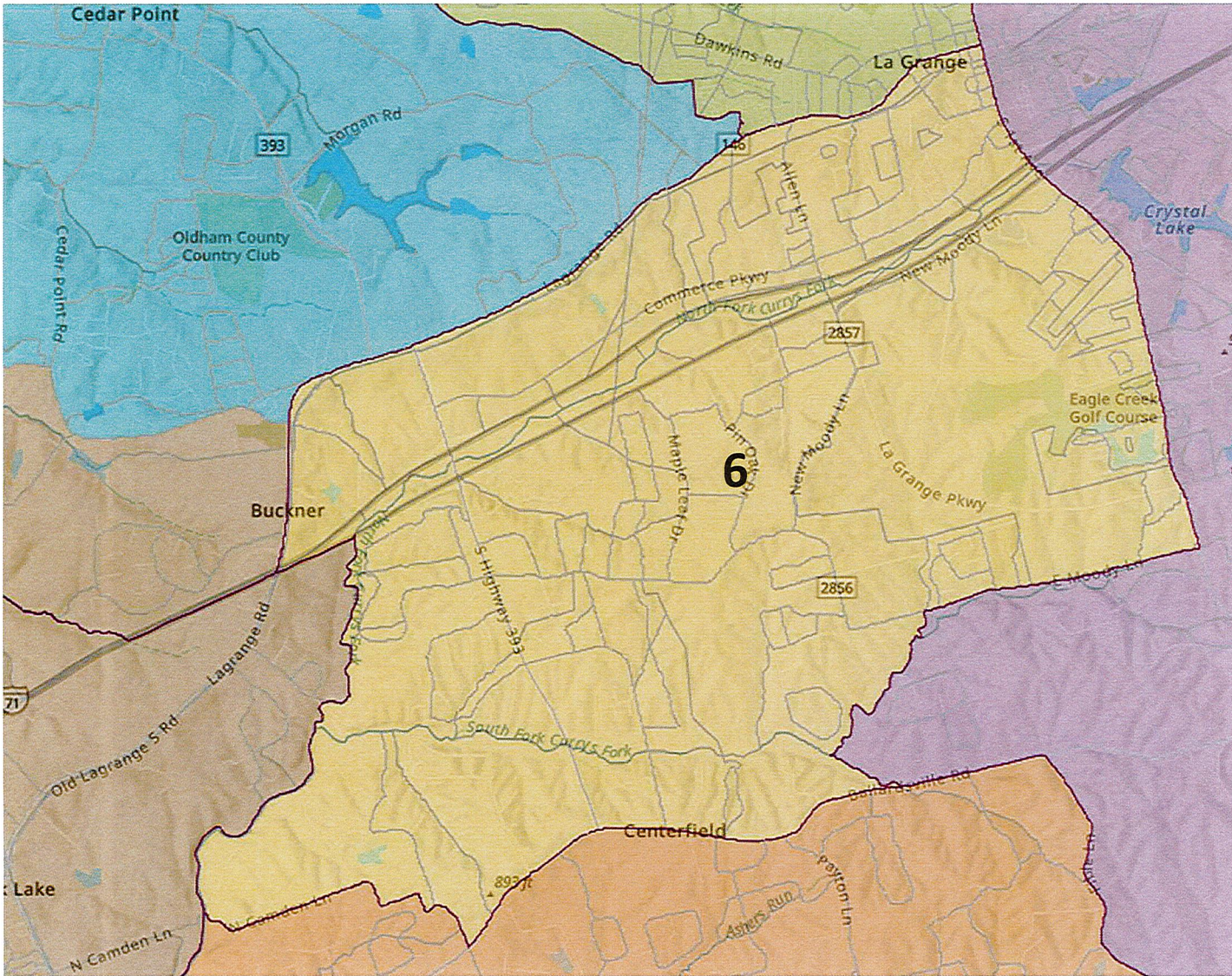


DISTRICT 5
Population: 8525
12%

MAGISTERIAL DISTRICT 6

BEING bounded on the northwest by Magisterial Districts 2 and 3, on the east and southeast by Magisterial District 4, on the south by Magisterial District 5 and on the west by Magisterial Districts 8 and 2, and being more particularly described as follows:

BEGINNING at the intersection of Kentucky Highway 146 and the northbound lanes of Interstate Highway 71 (1-71) and being a corner with Magisterial District 8 in a north line of Magisterial District 5; thence north and northeast with Highway 146 (becoming Jefferson Street) and with Magisterial District 3 at an intersection with the corporate boundary of the City of LaGrange (January 1, 2011), to the intersection with Kentucky Highway 53 (First Street), and being in a west line of Magisterial District 4; thence with District 4 for the following courses: southeast with Highway 53 to the intersection with Kentucky Highway 2856 (Moody Lane); west with Highway 2856 past the intersection with Wiano Drive to the intersection with an unnamed tributary to the South Fork of Currys Fork; south (downstream) with the unnamed tributary to the intersection with the South Fork of Currys Fork; southwest (downstream) with the South Fork of Currys Fork to the intersection with an unnamed tributary; and southeast (upstream) with the unnamed tributary to the intersection with Kentucky Highway 22 and being in a north line of Magisterial District 5; thence with the lines of District 5 for the following courses: west with Highway 22 to the intersection with North Camden Lane; north and west with North Camden Lane to the intersection with Currys Fork; northeast (upstream) with Currys Fork to the intersection with the northbound lanes of Interstate Highway 71 (1-71); and southwest with the northbound lanes of 1-71 to the beginning.



DISTRICT 6
Population: 8233
12%

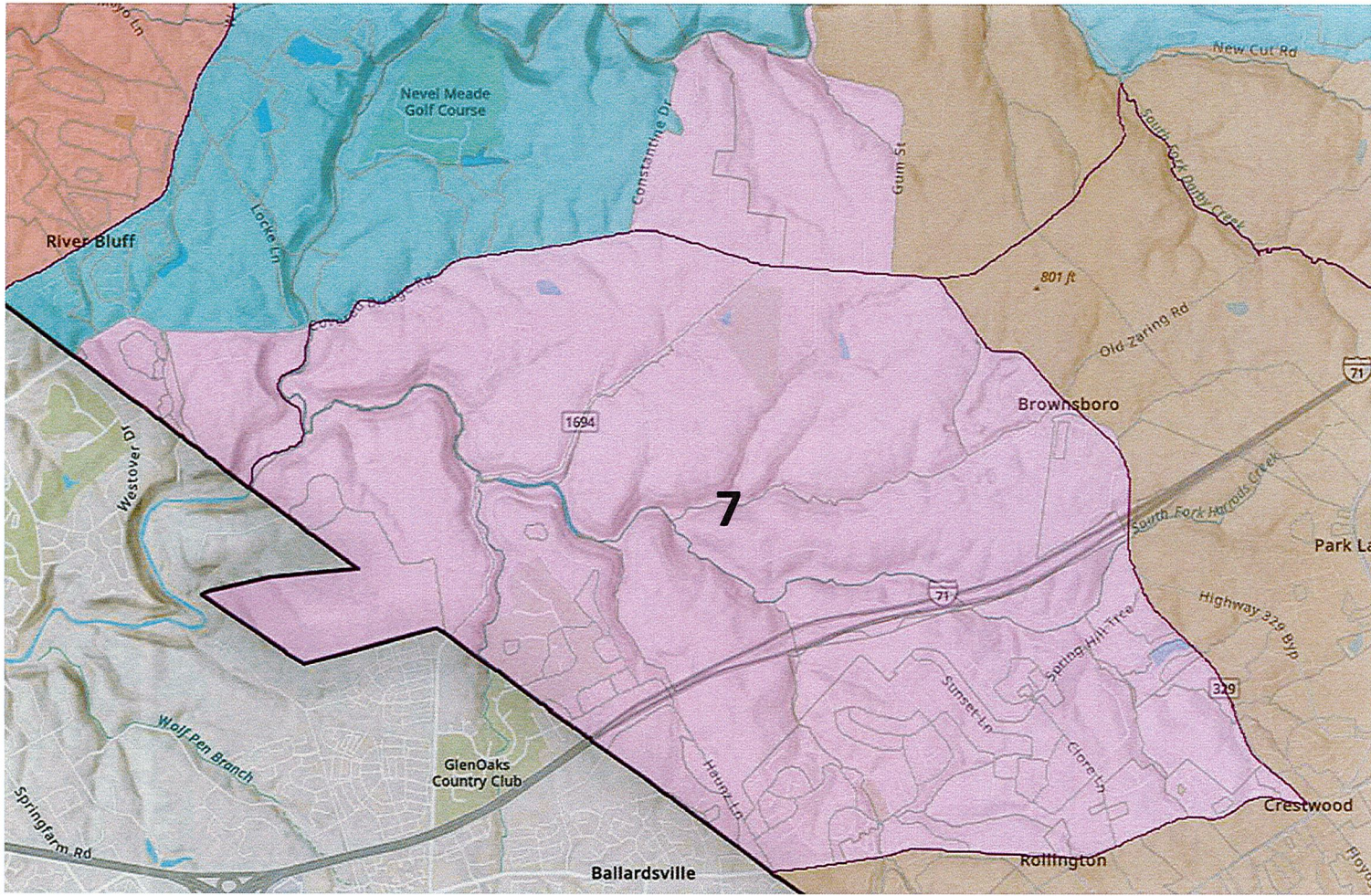
MAGISTERIAL DISTRICT 7

BEING bounded on the north by Magisterial District 2, on the east and south by Magisterial District 8 and on the southwest by Jefferson County, and being more particularly described as follows:

BEGINNING at the intersection of Kentucky Highway 22 and the Jefferson County boundary and being a corner with Magisterial District 8; thence northwest with the Jefferson County boundary to its intersection with Hwy 329 (Cover Bridge Rd).

Being a corner with Magisterial District 2; thence with the lines of District 2 for the following courses: northeast Kentucky Highway 329 to Constantine Dr; North on Constantine Dr, thence following a north extension of Constantine Dr to an intersection with Harrods Creek; east along Harrods Creek to intersection with Gum Street; south along Gum St to Highway 329; and east with Highway 329 to intersection with Kentucky Highway 1817 (Halls Hill Road).

Being a corner with Magisterial District 2 and Magisterial District 8; thence along the lines of Magisterial District 8 for the following courses: southeast with Highway 329 to the intersection with Kentucky Highway 22; and west with Highway 22 to the beginning.



DISTRICT 7
Population: 8659
13%

MAGISTERIAL DISTRICT 8

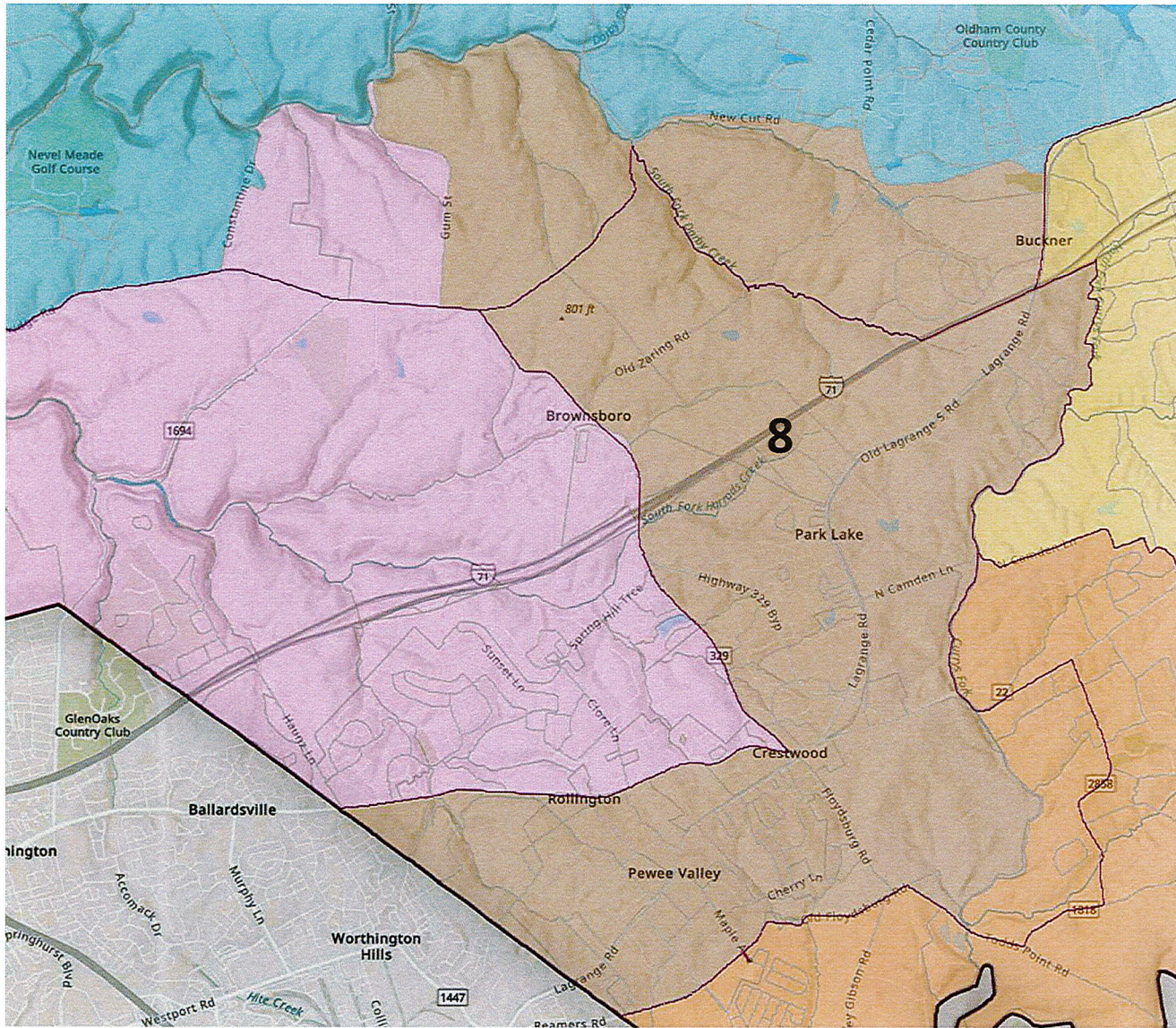
BEING bounded on the northwest and northeast by Magisterial Districts 2 and 6, on the east and southeast by Magisterial Districts 6 and 5, on the south by Magisterial District 5 and on the southwest by Jefferson County, and being more particularly described as follows:

BEGINNING at the intersection of Kentucky Highway 22 and the Jefferson County boundary and being a corner with Magisterial District 7; thence with the lines of District 7 for the following courses: east with Highway 22 to the intersection with Kentucky Highway 329; northwest with Highway 329 to the intersection with Gum Street. North along Gum Street to the intersection with Harrods Creek.

Being a corner with Magisterial District 7 and Magisterial District 2; thence with the lines of District 2 for the following courses: north with Harrods Creek(upstream) to the confluence of Darby Creek; East along Darby Creek to the confluence with South Fork Darby Creek; thence south with South Fork Darby Creek to the intersection with Hwy 1817(New Cut Rd); thence east with Hwy 1817(New Cut Rd) to the intersection with Hwy 146.

Being a corner with Magisterial District 2 and Magisterial District 6; thence with the lines of District 6 for following courses: South on Hwy 146 to the intersection northbound lanes of interstate 71 (I 71); northeast with the northbound lanes of J-71 to the intersection with Curry's Fork; thence southwest Curry's Fork to the intersection with North Camden Lane.

Being a corner with Magisterial District 6 and Magisterial District 5; thence with the lines of District 5 for the following courses: continuing southwest (downstream) with Curry's Fork to the intersection with Kentucky Highway 1408 (Todds Point Road); northwest with Highway 1408 to the intersection with Old Floyd'sburg Road; and southwest with Old Floyd'sburg Road to the intersection with the boundary of Jefferson County; thence with the Jefferson County boundary to the beginning.



DISTRICT 8
Population: 8306
12%

August 22, 2023

Meeting Minutes of the Fiscal Court Magistrate Reapportionment Committee

Those present at the meeting were Magistrate Stephanie Hawkins, Magistrate Kevin Jeffries, Magistrate Michael Logsdon, County Clerk Amy Alvey, County Attorney Berry Baxter and KIPDA GIS Manger Zach Herzog.

Magistrate Chris Haunz observed the meeting.

Motion made by Magistrate Hawkins and seconded by Magistrate Logsdon to have Magistrate Jeffries chair the meeting. Motion carried

Magistrate Jeffries called the meeting to order at 3PM. Attorney Baxter stated the meeting was called due to lack of public notice of August 10, 2023 committee meeting.

Zach Herzog, KIPDA GIS Manager, provided the last version of the reapportionment map to the committee for proposed edits. Discussion followed. Magistrate Logsdon requested to move an area north of Halls Hill Road, east of Gum Street and South of Darby Creek from District 2 to District 8. The population of the area was 250 persons.

Motion made by Magistrate Hawkins and seconded by Magistrate Logsdon to forward the updated map, with Magistrate Logsdon's changes, and legal descriptions to Fiscal Court for a second reading. Motion carried.

Motion made by Magistrate Hawkins and seconded by Magistrate Logsdon to adjourn the meeting at 3:19PM. Motion carried.